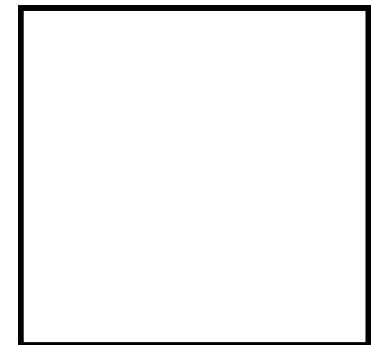
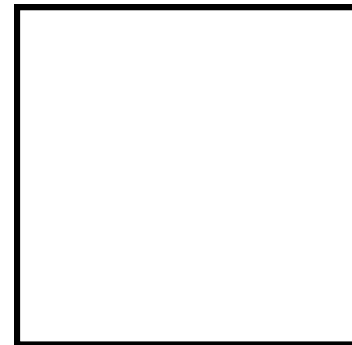




**Springhead Medical Centre**

## **Cancer Care Service**

**We want to help you learn to  
live with your diagnosis.**

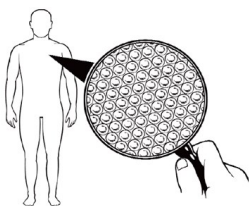


**Cancer support team:**

**Carol and Christine Tel: 01723 580 940**

**Easy read**

## About the Cancer Care Service



The Team work with people who have a diagnosis of cancer.



There are people who can support and help you along the way.



Decisions may need to be made in your best interest.



We will make sure you get helpful information, in a way you understand.

We will make sure you get the time you need to talk.

## Remember!



You don't have to feel alone.

Sometimes it helps to talk to somebody outside of your family, about how you are feeling.

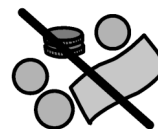


You are not being any trouble to us. It is our job to support you and we want to help.

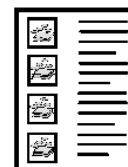


We can also help your family and friends.

If we can't help, we will find someone who can.

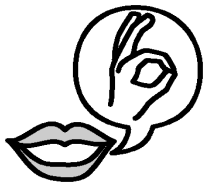
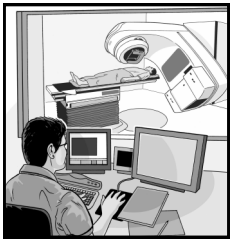


You **do not have to pay** for any of your medications if you have cancer.



You will need a form from your doctors.

## Words you may hear



**Treatment** - there are different things that can be done to help you get well again or to help you feel less ill from Cancer.

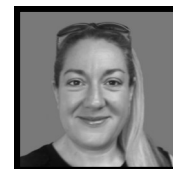
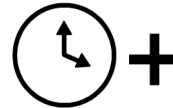
**Radiotherapy** - this is the use of powerful x-rays to treat cancer. It can be used on many different types of cancer.

**Chemotherapy** - is another type of treatment for cancer. It uses anti cancer drugs to kill cancer cells in the body.

**Consent** - this means that you understand why you need the treatment and say that it is OK to have the treatment that the doctor thinks is best for you.

**MDT** - Multi-Disciplinary Meeting. Doctors and other medical people getting together to talk about your care.

## What will your GP do?



Although the hospital will now be leading your care, your doctor will still continue to support you.

We will :-

- Book appointments in advance for you.
- Give you the time you need to talk about things.
- Let you talk to the GP on the telephone.
- Have a home visit from the GP if that is better for you.
- Help you as much as we can.
- Carol and Christine will be your main contact points. You can call them Mon - Friday between 9am and 1pm.



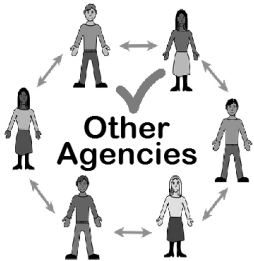
**01482 335224.**

## The Cancer Support Team



We have some books in easy read. We will use these books to try our best to explain to you what is going to happen.

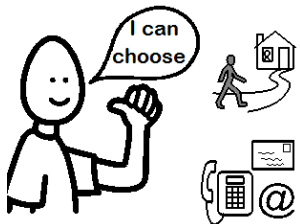
We will also give you a list of easy read resources.



We will also talk to you about how other agencies may also be able to help you.



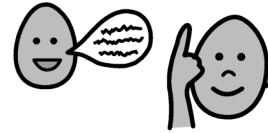
Some people worry about money; we can put in touch with those people who can help.



We will be in touch with you as much as you want us to be.

We are here to help and support.

## Words you may hear:



Some words you may hear and what they mean:



**Biopsy** - this means we might need to take a sample, and do some more tests.



**Histology** - this is where your sample would go to be tested. It will help us see what type of Cancer you have and the best way to treat it.



**Scans and X-rays** - these are ways of taking pictures of the inside of your body, so the doctor can check what is happening on the inside of you.



**Diagnosis** - this word is used when they know what is wrong with you, usually a diagnosis is given after the tests.