

AF Screening Tools

Instructions for Importing and Activating

- 1 Ensure that the protocol and template are saved somewhere accessible. You can request the AF screening tool template by emailing info@yhahsn.com.
- 2 In SystemOne navigate to Setup> Data Entry> New template maintenance.
- 3 Click import template and navigate to saved template.
- 4 Click Select and then Yes/OK to any questions asked.
- 5 Find template in "Unpublished templates" (at bottom of left hand templates list).
- 6 Right click on template and click "Publish", click "Yes".
- 7 Select "Publish locally", click "Yes".
- 8 Navigate to Setup > Workflow Support > Protocols.
- 8 Click "Import Protocol" and navigate to the saved protocol.
- 10 When the protocol is open, click on the Triggers tab and decide when you want this protocol to trigger. We would advise:
 - Allow the protocol to be launched automatically
 - Trigger the protocol 'Patient Record Retrieve'
 - Restrict triggering to specific staff roles (include GPs, Pharmacists, Nurses, HCAs)**See Figure 1 overleaf**
- 11 In Design tab double click on the Action box in the protocol design.
- 12 Search "AHSN", select template, click "OK".
- 13 Click "OK" to all prompts and then click "OK" to save.
- 14 Find "Unpublished Protocol" in the left hand menu.
- 15 Select "Publish Protocol" from the top ribbon, click "Yes".
- 16 Click "Publish locally" - "OK" - "Yes".
- 17 When the protocol is triggered on a patient, the following will appear. **See figure 2 overleaf.**
- 18 Clicking "Continue to recording template" will display the following data entry template. **See figure 3 overleaf.**

AF Screening Tools

Instructions for Importing and Activating

Figure 1

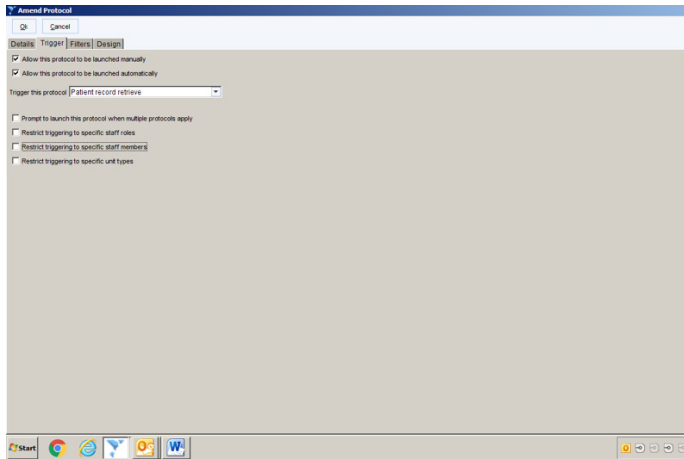


Figure 2

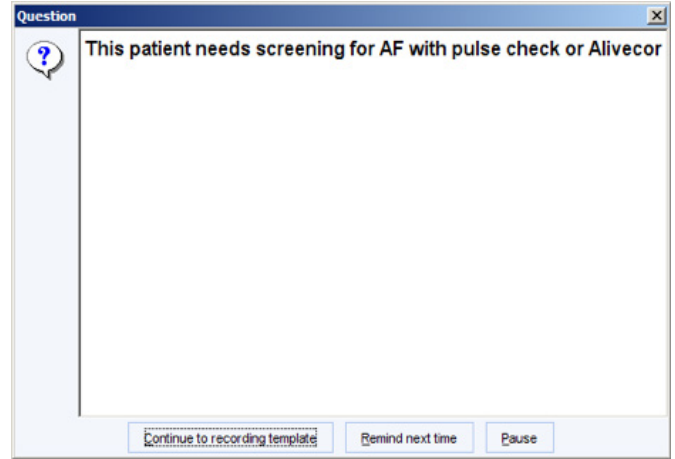


Figure 3

