





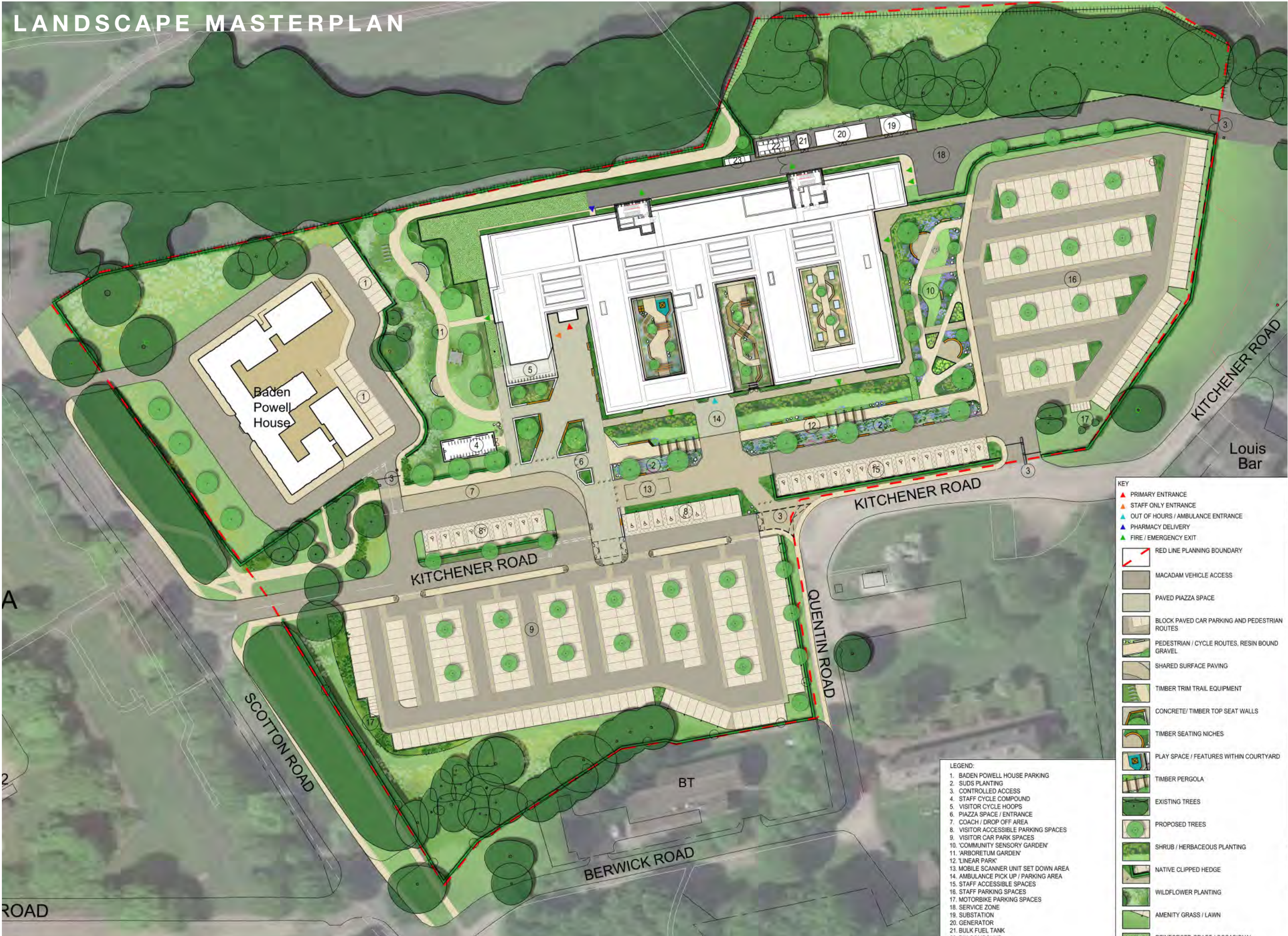
# LANDSCAPE DESIGN PRINCIPLES

1. ENHANCING USER EXPERIENCE
2. GREEN INFRASTRUCTURE AND BIODIVERSITY
3. CLIMATE CHANGE AND SUSTAINABILITY
4. ACCESS, MOVEMENT AND SECURITY
5. CONSIDERATE OF CONTEXT AND ADJACENCIES





# LANDSCAPE MASTERPLAN





# CAR PARKING AND ARRIVAL

There are two car parking zones for staff and visitors.

A controlled access barrier enables the staff car park to be managed securely.

Accessible Parking spaces are provided to the south of the building, within close proximity of the building entrance.

The car park surface will be macadam, with dropped kerbs, tactile paving.

Pedestrian paved zones indicating safe pedestrian movement across the car park, in accordance with NHS Parking Guidance.

The intent is to have a one-way movement of cars through the car parks to further improve pedestrian safety.

Signage will lead people towards the building entrance.

Tree and shrub / hedge planting to add vertical greening and softening to the expanse of hard landscape, to shade and cool the environment in warmer summer months.



Visitor car park



Staff car park





# ENTRANCE PIAZZA

The Entrance Piazza is the 'welcome mat' to the new healthcare facility

High quality landscape

Raised planters & biophilic planting

Seating

Clear sightlines

Cycle parking





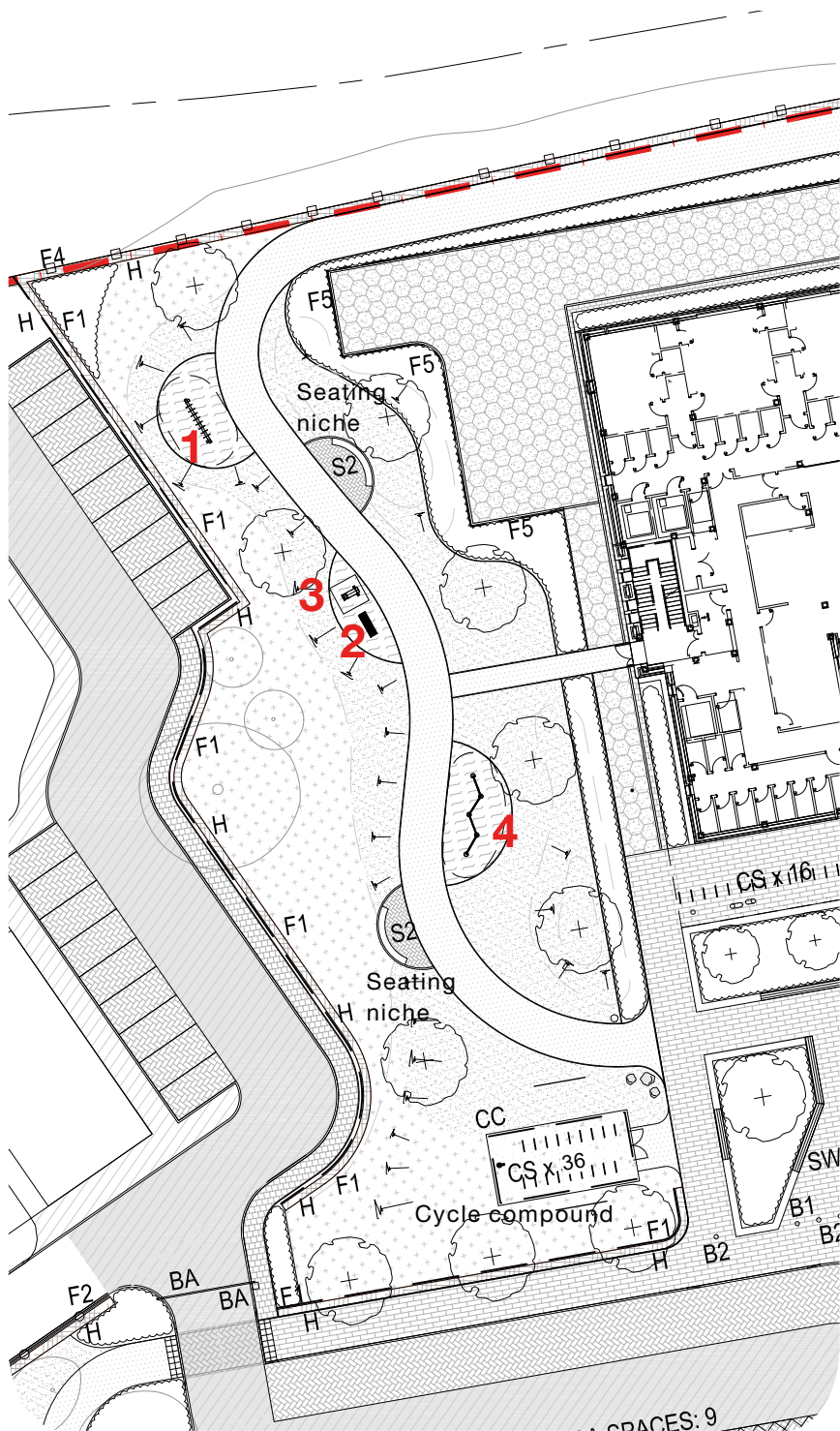
# ARBORETUM GARDEN

- Naturalistic environment
- Connection with nature
- Place for outdoor fitness to support healthy lifestyles
- Place for contemplation and resting
- Walking, jogging, cycling
- Smooth resin bound gravel surface
- Wildflower swathes and arboretum tree species





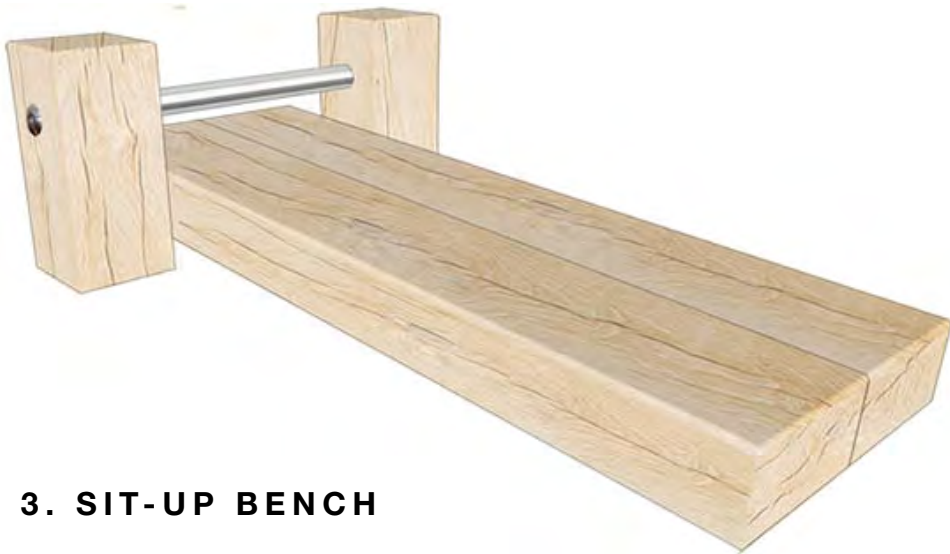
FITNESS EQUIPMENT



1. MONKEY BARS



2. STEP UP BENCH



3. SIT-UP BENCH



4. BALANCE BEAM



# COMMUNITY SENSORY GARDEN

Tranquil environment to facilitate mindful activities to support mental wellbeing.

Contemplative, restful and sensory garden.

Space for community groups to enjoy.

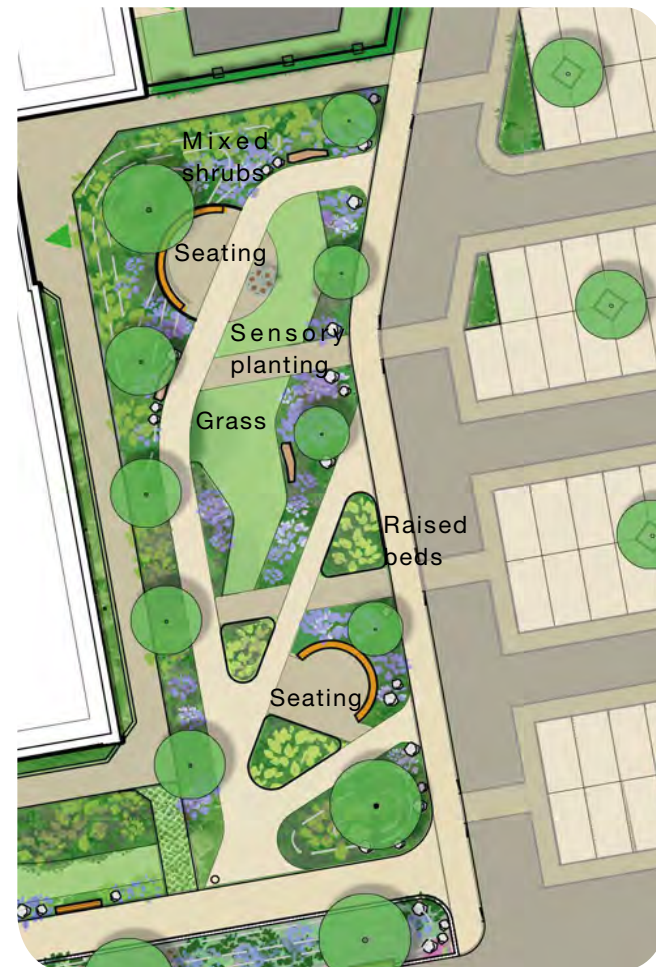
Space for staff to recuperate and de-stress.

Social seating, or individual seating.

Horticultural opportunities - Raised beds for growing food / herbs.

Fruit trees and multi-stemmed trees with attractive bark and spring flowers for seasonal interest.

Opportunity for focal point / sculpture / plaque to be incorporated, to remember the history of the Garrison, or similar contemplative element.





# LINEAR PARK

- Green boulevard linking spaff car park and the main entrance.
- Timber pergola structures and seating creates rhythm and helps break up the length of the path.
- SuDS / biodiverse planting to the south.
- Gentle mound with attractive shrub planting to the north,
- Seat walls with timber tops provide resting points along the route.
- Ambulance pick up area.
- MRI / Mobile scanner unit set down area.



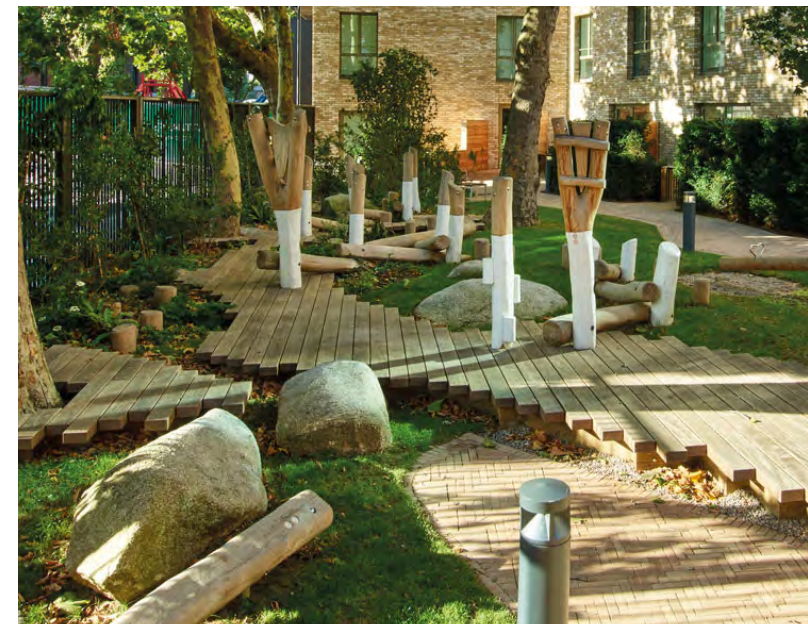


# COURTYARDS AND ROOF TERRACE

Courtyard 1:  
Direct links to Atrium space.  
Playful elements for children to enjoy.  
Seating for patients and visitors or waiting family members.

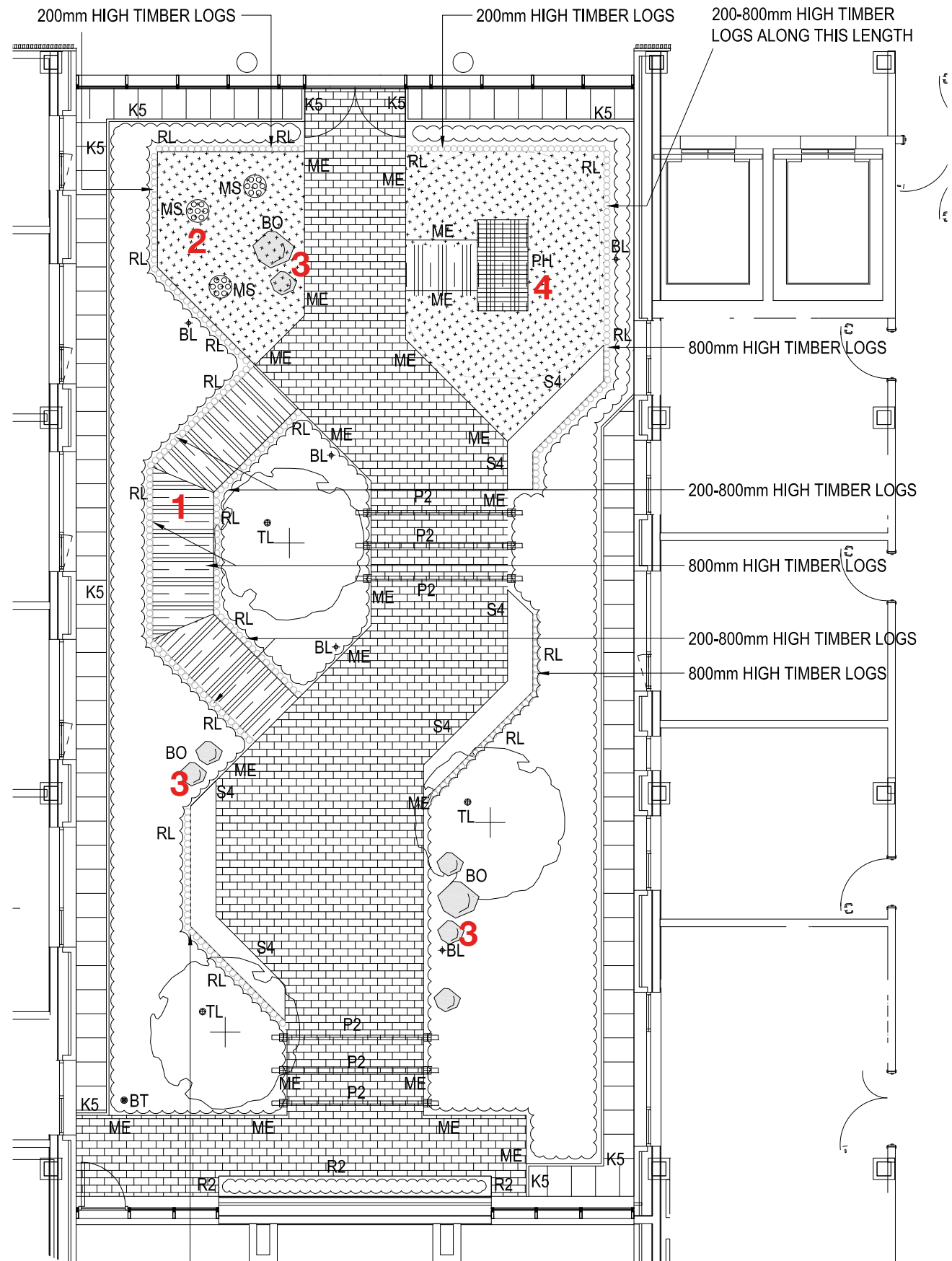
Courtyard 2:  
Designed with physical rehabilitation and physiotherapy in mind.  
Provides staff and patients with an external resource with medical benefits, such as improved physical balance and strength.  
Variety of path surfaces, level changes, gradients and stepping logs.

Courtyard 3:  
1st Floor Terrace.  
Informal seating spaces.  
Raised planters with small multi-stemmed trees.





## GROUND FLOOR COURTYARD 1



### 1. Composite timber boardwalk



2. Play mushrooms / seats



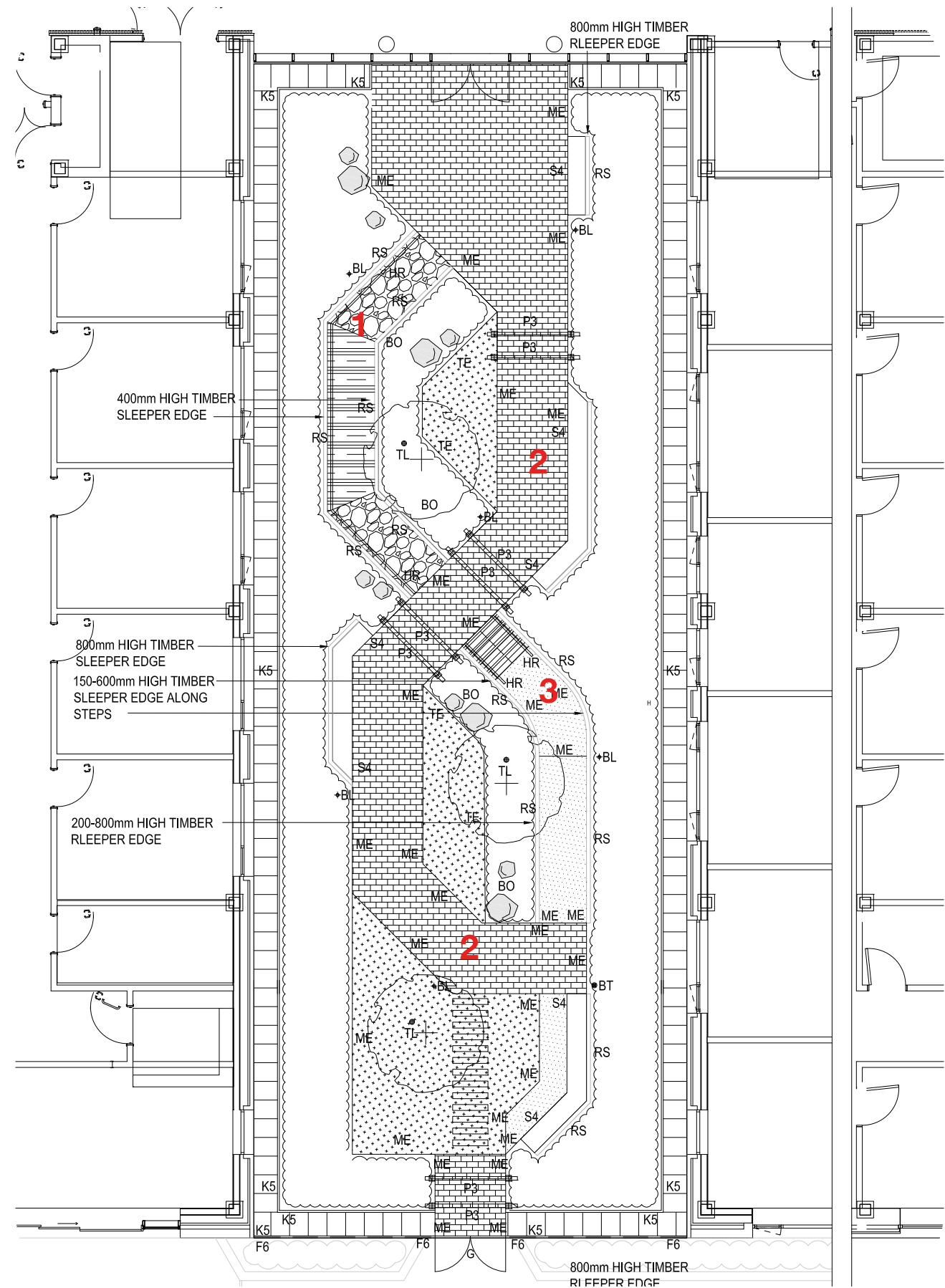
### 3. Play boulders



#### 4. Play hut



# GROUND FLOOR COURTYARD 2



1. Textured path with handrail



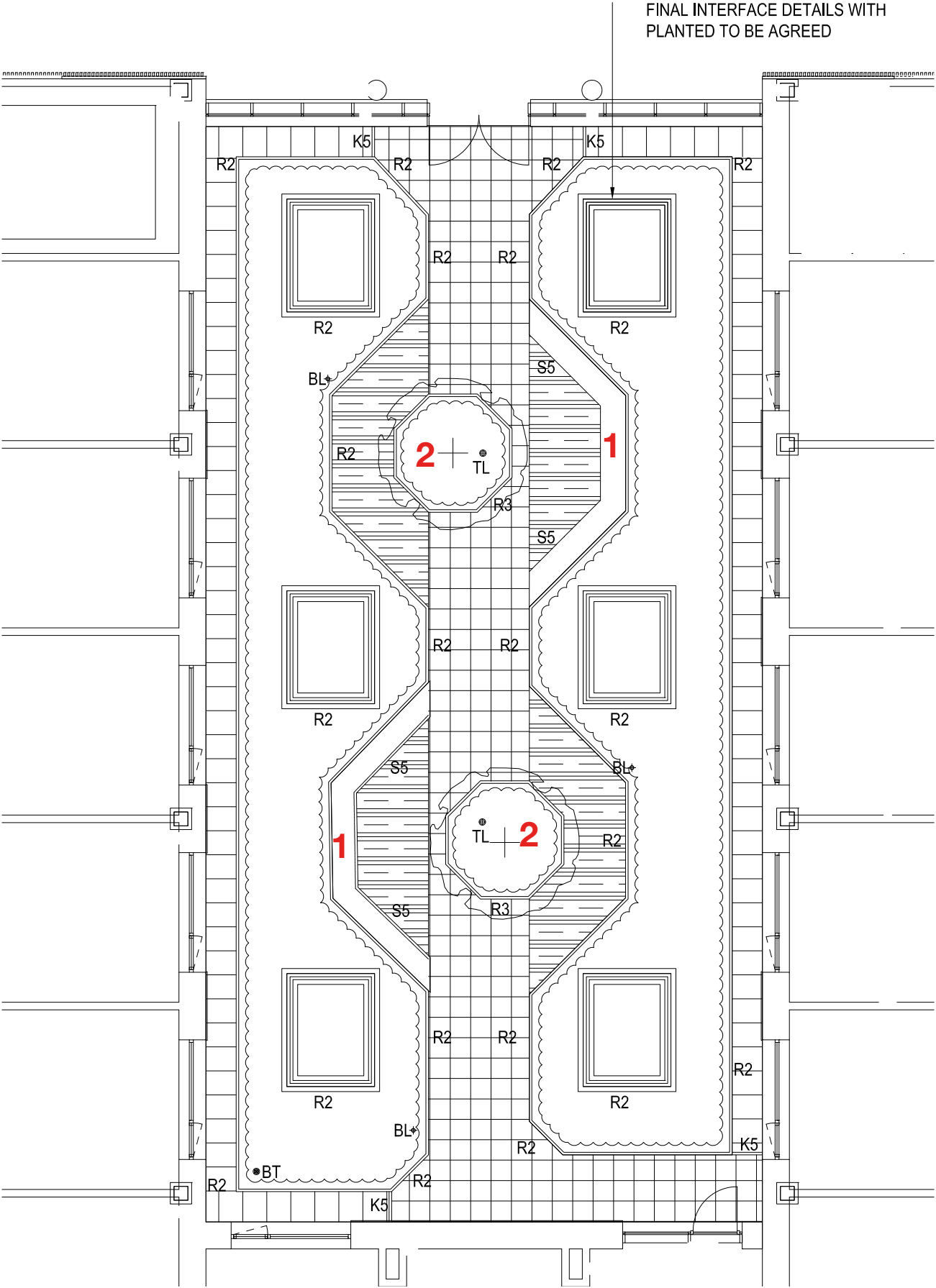
2. Wide meandering path



2. Steps and ramp with handrails



# FIRST FLOOR COURTYARD



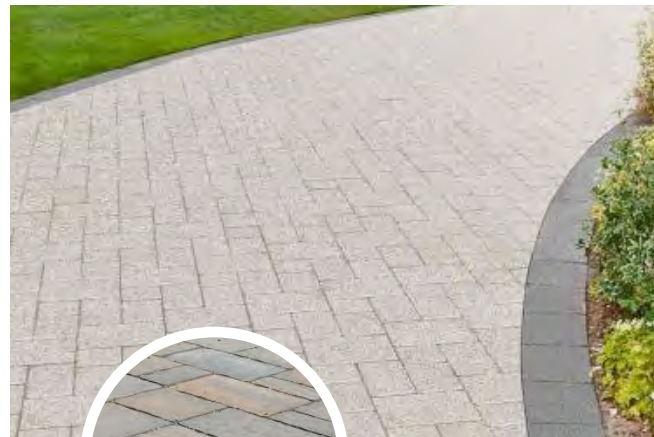
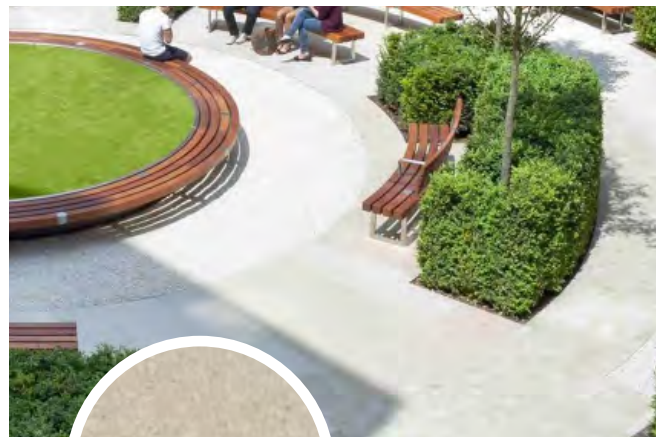
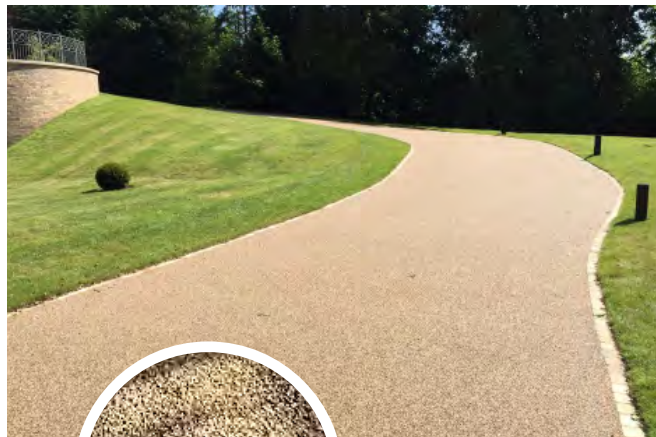
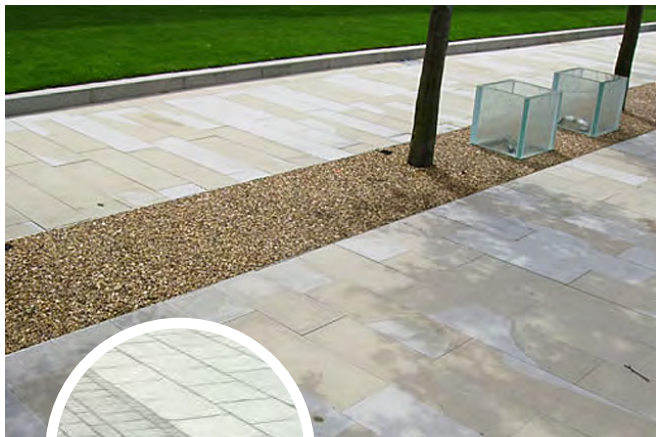
1. Raised metal planter with timber seat edge



2. Central feature timber clad planter with small tree



HARD MATERIALS PALETTE





FURNITURE AND LIGHTING





**SOFT LANDSCAPE AND  
BIODIVERSITY STRATEGY**



Existing notable mature specimen within site



